

**LUMA**  
VISION

[www.luma.co.in](http://www.luma.co.in)

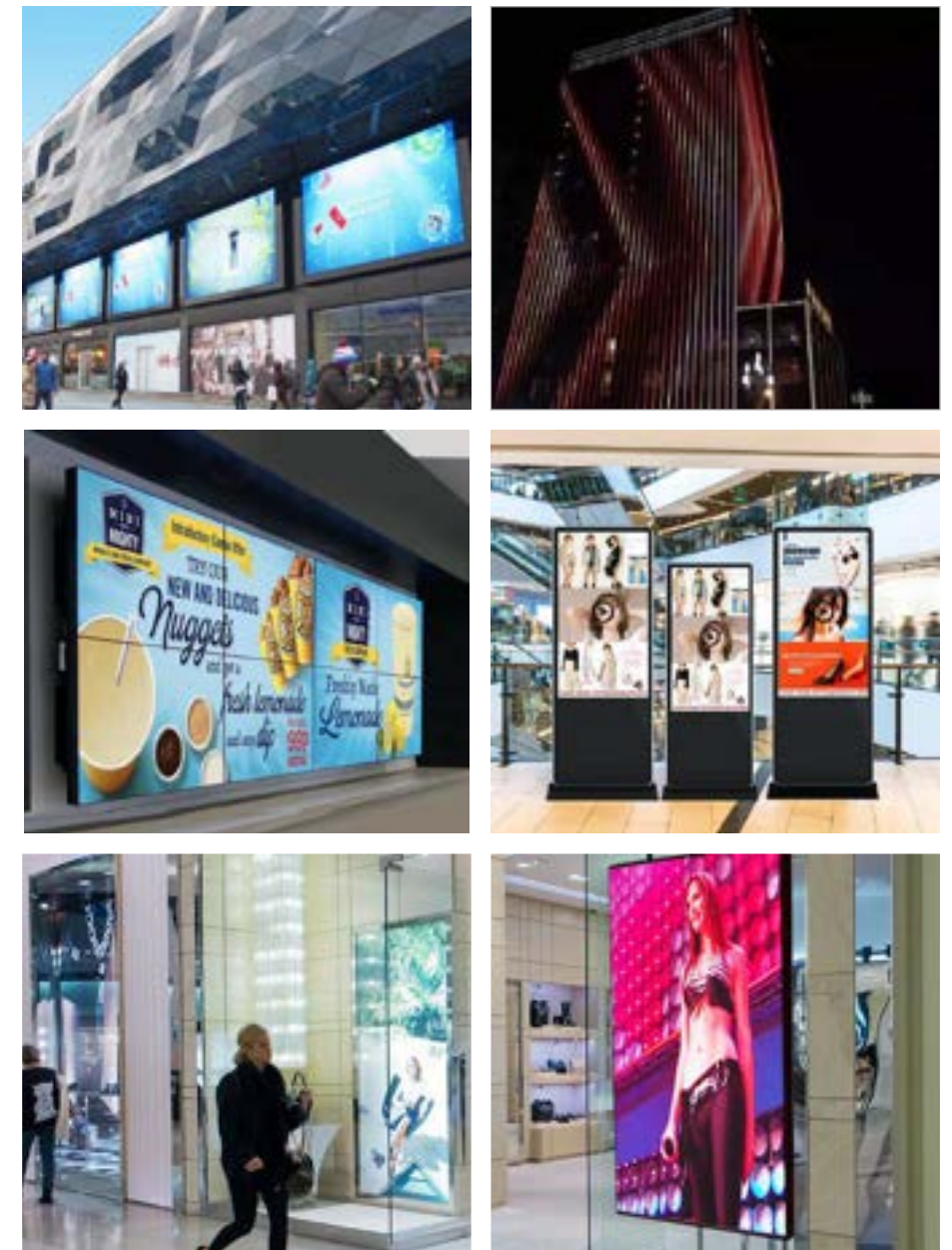


# PRODUCT CATALOGUE

## ABOUT LUMA VISION

Luma Vision is an integrated supplier and solution provider for a variety of LED display screens and LCD display products. Our range of display products are robust, innovative, flexible and responsive as they offer unique application possibilities. We are dedicated to providing turnkey solutions to meet the demands of different markets and usage conditions; such as indoor, outdoor, advertising, retail environment, conference rooms, sport events, traffic signs, etc.

We believe in providing seamless service to our clients by suggesting the right product, impeccable installation, training, content creation & annual maintenance of the LED screens. We welcome challenging projects to provide cutting edge digital display solutions to our clients.





# PI Series

## PREMIUM INDOOR

PI series LED display provides picture of high uniformity without gaps, ensuring seamless mosaic effect. Slim and light weight design with high refresh rate and features like adjustable brightness makes it ideal for premium high end applications.

### Features:

1. Long life time: Normal life span should be more than 5-6 years.
2. Intelligent system: Remote control, efficient temperature and humidity adjustment, automatic status in monitoring and alarm functions available.
3. Dot- by- dot calibration: New age calibration technology enables stunning image quality even years of installation.
4. Easy to install: Stacking installation design enables easier installation. The installation process can be completed just by the mounting plate to fix the cabinet and steel structure.



SPECIFICATIONS	PI3	PI4	PI5	PI6	PI7
<b>Pixel Pitch</b> (mm)	3	4	5	6	7.62
<b>Brightness</b> (nits)	1000	1500	1300	1300	700
<b>LED Encapsulation</b>	SMD2121	SMD2121	SMD3528	SMD3528	SMD3528
<b>Viewing Angle</b>	H:120° ; V:100°	H:120° ; V:100°	H:120° ; V:100°	H:120° ; V:100°	H:120° ; V:100°
<b>Panel Size</b> (mm)	480x480	640x640	640x640	768x768	976x976
<b>Panel Resolution</b>	160x160	160x160	128x128	128x128	128x128
<b>Panel Weight</b> (kg)	8.4	17	18	28	38
<b>Power Consumption</b>	543/182	796/286	817/273	804/268	457/152
<b>Refresh Rate</b> (Hz)	>1000	>1000	>1000	>1000	1000
<b>Gray Level</b> (bit)	16	14	14	14	14
<b>IP Rating</b>	30	30	30	30	30
<b>Temperature</b>	0~+45/10~90%	0~+45/10~90%	0~+45/10~90%	0~+45/10~90%	0~+45/10~90%



### PI APPLICATION

- Retail
- Museum
- Hotel
- Bank
- Classroom
- Airport
- Train Station
- Theater
- Cinema

# O-DIP Series

OUTDOOR-DIP

O-DIP series are suitable for the outdoor fixed installation as they provide higher brightness, even under the sunshine. As it is powered by DIP (Dual in-line package) technology it is more efficient in heat dissipation than SMD.

**Features:**

1. Light weight: 24 kg/ sq meter.
2. Slim: 96 mm thickness, the thinnest of its kind.
3. Noiseless - Aluminum cabinet, no fan design, no noise.
4. Module and cabinet front service, easy to maintain.
5. No working platform is needed.
6. Front IP65, Back IP54. It can work under harsh outdoor environment.
7. Three design options: hollow, blinds and solid.



SPECIFICATIONS	O-DIP10	O-DIP16	O-DIP20	O-DIP25	O-DIP50
Pixel Pitch (mm)	10	16.67	20	25	50
Brightness (nits)	7000	7000	7000	6500	6000
LED Encapsulation	DIP346	DIP346	DIP346	DIP346	DIP346
Viewing Angle	H:110° ; V:50°	H:110° ; V:50°	H:110° ; V:50°	H:110° ; V:50°	H:110° ; V:50°
Panel Size (mm)	1200x1200	1200x1200	1200x1200	1200x1200	1600x800
Panel Resolution	120x120	72x72	60x60	48x48	32x36
Panel Weight (kg)	42	41.5	41	41	52
Power Consumption	411/136	411/136	411/136	384/127	281/94
Refresh Rate (Hz)	>1000	>1000	>1000	>1000	>4000
Gray Level (bit)	14	14	14	14	16
IP Rating	65/54	65/43	65/43	65/43	65/54
Temperature	-20~+50/10~90%	-20~+50/10~90%	-20~+50/10~90%	-20~+50/10~90%	-20~+50/10~90%



# O-SMD Series

OUTDOOR-SMD

O-SMD series with automatic brightness adjustment and wider viewing angle provides clear image even in bright outdoor environment.

**Features:**

1. Ultimate visual performance, wide viewing angle to 140/120° (H/V) to reach more audience, high gray scale to show soft color effect.
2. Bright and clear pictures with high contrast ratio of 6000:1.
3. Better color uniformity and color mixing effect owing to SMD LED with low luminous spot center distance deviation.
4. With cabinet IP65 and module IP68, the display screen is certified to be used at all weather conditions.
5. Module front maintenance available. Cabinet front/ rear service available; quick installation with few simple tools.
6. Fan-less design to create quiet working condition. Slim profile and light weight makes it compatible with static billboard.



SPECIFICATIONS	O-SMD6	O-SMD8	O-SMD10	O-SMD16
<b>Pixel Pitch</b> (mm)	6.6	8.3	10	16.67
<b>Brightness</b> (nits)	5500	5500	5500	5000
<b>LED Encapsulation</b>	SMD3535	SMD3535	SMD3535	SMD3535
<b>Optimum Viewing Angle</b>	H:140° ; V:120°	H:140° ; V:120°	H:140° ; V:120°	H:140° ; V:120°
<b>Panel Size</b> (mm)	800x800   1200x1200	800x800   1200x1200	800x800   1200x1200	800x800   1200x1200
<b>Panel Resolution</b> (pixels)	120x120   180x180	96x96   144x144	80x80   120x120	48x48   72x72
<b>Panel Weight</b> (kg)	14.5±2   40.5±2	14.5±2   40±2	14±2   39±2	14±2   37±2
<b>Power Consumption</b>	555/185   555x185	555/185   555x185	555/185   555x185	555/185   555x185
<b>Refresh Rate</b> (Hz)	>1920	>1920	>1920	>1920
<b>Gray Level</b> (bit)	14	14	14	14
<b>IP Rating</b>	65/54	65/54	65/54	65/54
<b>Operating Temperature</b>	-20~+50/10~90%	-20~+50/10~90%	-20~+50/10~90%	-20~+50/10~90%

## O-SMD APPLICATION

Hoarding | Outdoor advertising | Shopping malls | Airport exterior | Train station exterior | Stadium | Office exterior

Park | Building Facade | Information sharing at large open areas.



# GL Series

GLASS LED

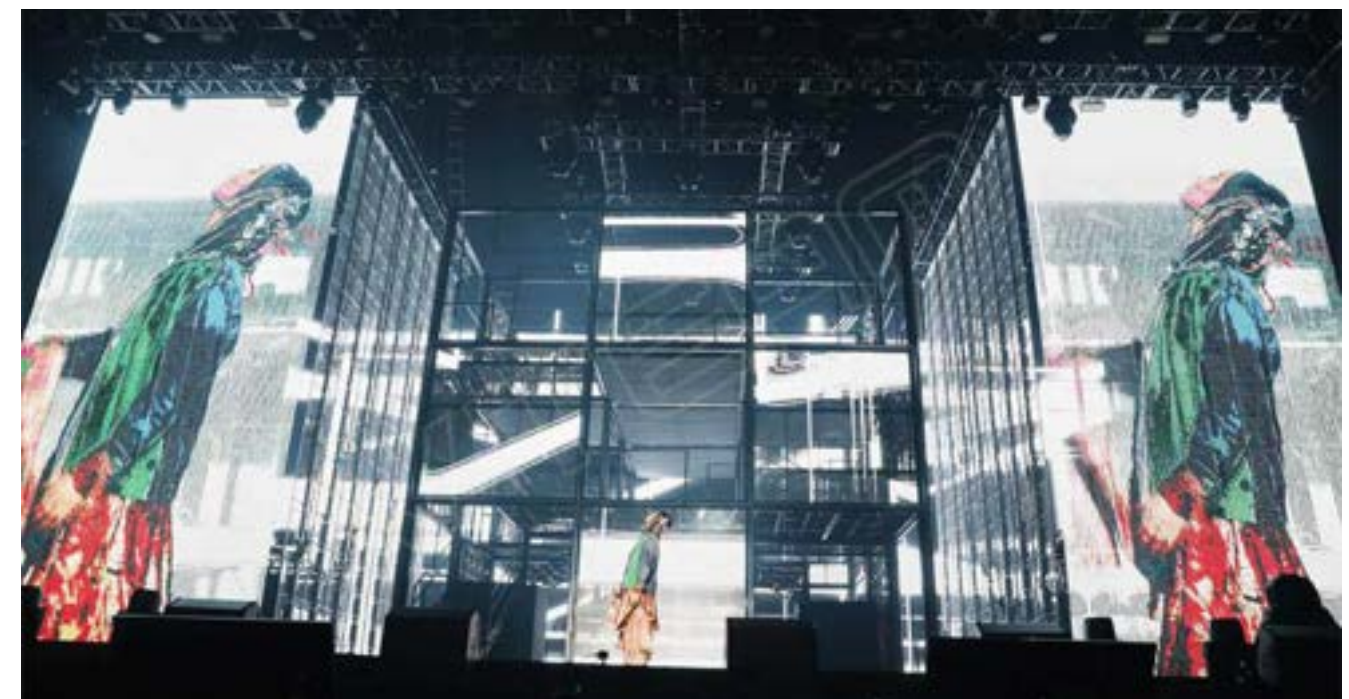
GL series is a transparent LED display screen, with super delicate outlook and fabulous video effect. The product has been designed for shopping malls & store window advertising, etc. The compact design of the signal & power cables and seamless panel installation make it a perfect product for the store glass facade.

**Features:**

1. 40%-80% of transparency ratio ensures natural lighting in the building.
2. Light weight and slim profile: easy to install with versatile installation modes.
3. Adjustable brightness feature enables it suitable for both indoor and outdoor use.
4. Pixel pitch is customizable upon project requirements.
5. Both sides of the screen can be totally transparent, resembling a piece of crystal.
6. The pioneering product perfectly combines utility and beauty.



SPECIFICATIONS	GL10i	GL10	GL16	GL20
Pixel Pitch (mm)	10	10	16	20
Brightness (nits)	1500	6500	5000	6500
LED Encapsulation	SMD3528	SMD3535	SMD3535	SMD3535
Viewing Angle	H:120° V:100	H:120° V:100	H:120° V:100	H:120° V:100
Panel Size (mm)	320x960	320x960	480x768	320x960
Panel Resolution	32x96	32x96	30x48	16x48
Panel Weight (kg)	5	5	5	5
Power Consumption	450/150	600/200	650/216	850/283
Transparency	64%	64%	75%	80%
IP Rating	30	30	30	30
Gray Level (bit)	14	14	14	14
Refresh rate	>1920	>1920	>1920	>1920
Operating Temperature	0~+45/10~90%	0~+45/10~90%	0~+45/10~90%	0~+45/10~90%



# IF Series

## INTERACTIVE FLOOR

IF7/7S is a high-resolution LED video floor that provides creative solution for TV studios, auto shows, malls, discos, bar, entertainment centers, etc.

### Features:

1. Maximum 1200 kg load-bearing for each square meter.
2. High rigid module cover, great wear resistance function.
3. Height adjustable base, installation can be easily done.
4. Real-time user experience gained via infrared sensors.
5. 6.25 cm sensor distance ensures accurate tracking of the objective position.
6. Fluid response enables it can be as creative as you want. Besides used as LED video floor, it also can be hung up as LED video wall.



SPECIFICATIONS	IF7	IF7S
INTERACTIVE	No	Yes
PIXEL PITCH	7.8mm	
PANEL RESOLUTION	64×64 dots	
LED QUANTITY/PANEL	4096 dots	
PIXEL CONFIGURATION	SMD3-IN-1	
BRIGHTNESS	1200-2000 nits*	3000 nits*
MAXBEAR WEIGHT	1200kg/m <sup>2</sup>	
REFRESH RATE	3000Hz	
GREY SCALE	16 bit	
BRIGHTNESS ADJUSTMENT	256 Level	
CONTRAST	1000:1	
PANEL DIMENSION	500×500×60mm	
PANEL AREA	0.25 m <sup>2</sup>	
PANEL WEIGHT	10.5 kg	
AVERAGE POWER CONSUMPTION	90W	
VIEWING ANGLE	140°/110°	
SHORTEST VIEWING DISTANCE	8m	
OUT-OF-CONTROL POINT	<0.0002	
TENURE LIFE OF LAMP (50% BRIGHTNESS)	>50,000 Hours	
OPERATING TEMPERATURE	-10°C~+40°C	
RELATIVE HUMIDITY	10%~90%	
IP RATING	IP43/54(Optional)	
INPUT POWER	AC110-240V 50/60Hz	
DRIVE MODE	Constant Current	
OPERATING SYSTEM	Windows 2000/XP/Vista/Windows7	
SIGNALTYPE (ADOPTING VIDEO PROCESSOR)	AV,S-Video,VGA,CVBS,HDMI,DVI,SDI	
CONTROL DISTANCE	HSYV<100m	
CERTIFICATES	TUV-RH CE, ETL, FCC	





# LC Series

LED CURTAIN

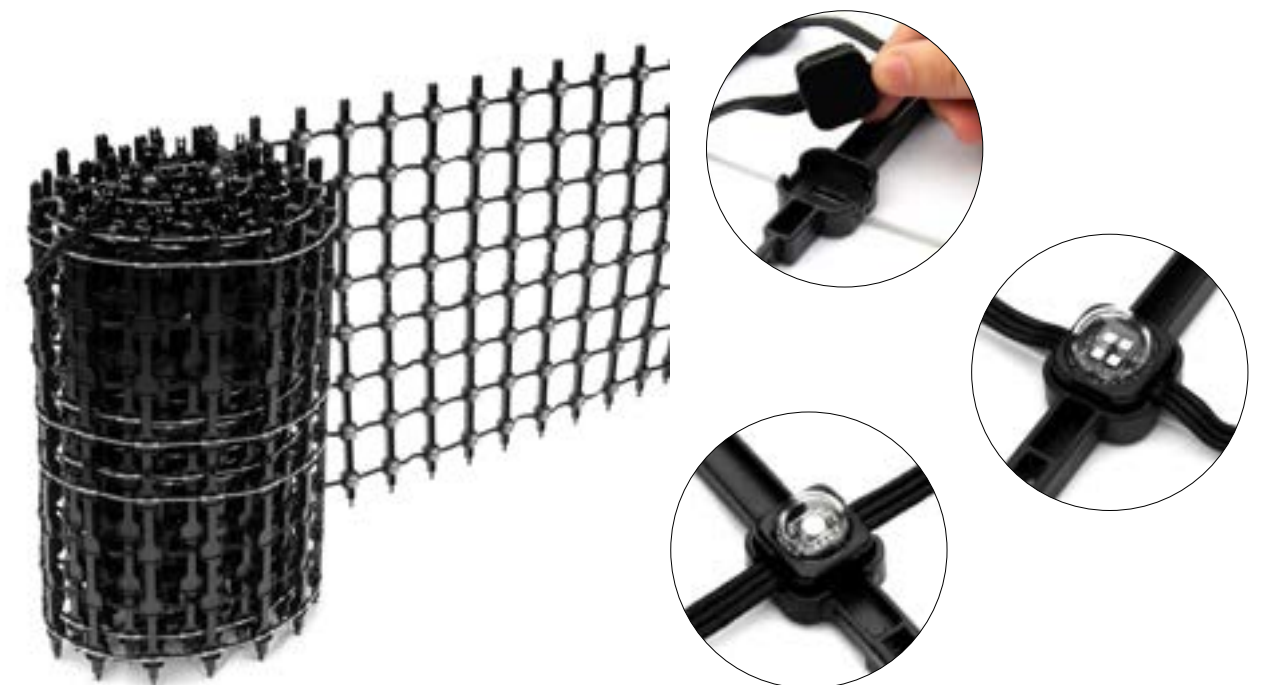
LC series is a unique flexible structure that enables panel to be curved, rolled up, hung up or folded to form versatile shapes. The uppermost 75% transparency rate makes the background clearly visible when the screen is off, and presents a special visual effect when the screen is on.

**Features:**

1. Modular large panel and fast connection locks makes the installation easy and fast.
2. IP 65, suitable for permanent outdoor or indoor usage.
3. The display screen due to its flexible nature can adapt to different scenarios.
4. It is perfect to show video and graphics for large-scaled stage background, shows, exhibitions, glass buildings , store facade, etc.



SPECIFICATIONS	LC55	LC80
PIXEL PITCH	55mm	80mm
PANEL RESOLUTION	128×8 dots	128×8dots
LED QUANTITY/PANEL	1024 dots	1024 dots
PIXEL CONFIGURATION	SMD 3IN-1	
BRIGHTNESS	1000-3000 nits*	800-2000nits*
REFRESH RATE	1000-1500Hz	
GREY SCALE	12 bit	
BRIGHTNESS ADJUSTMENT	255 Level	
PANEL DIMENSION	7040×440mm	10240×640mm
PANEL AREA	3.1m <sup>2</sup>	6.5m <sup>2</sup>
PANELWEIGHT	9kg/20 kg	7.5kg/22 kg
AVERAGE POWER CONSUMPTION	240W/700W	200W/700W
VIEWING ANGLE	120°/110°	
SHORTEST VIEWING DISTANCE	55m	80m
TRANSPARENCY	60%	75%
OUT-OF-CONTROL POINT	<0.0002	
TENURE LIFE OF LAMP(50%BRIGHTNESS)	>50,000 Hours	
OPERATING TEMPERATURE	-30°C~+40°C	
RELATIVE HUMIDITY	10%~90%	
IP RATING	IP54/65 (Optional)	
INPUT POWER	AC110-240V 50/60Hz	
DRIVE MODE	Constant Current	
OPERATING SYSTEM	Windows2000/XP/Vista/Windows7	
SIGNAL TYPE	AV,S-Video,VGA,CVBS,HDMI,DVI,SDI	
CONTROL DISTANCE	HSYV<100m	
CERTIFICATES	TUV-RH CE, ETL, FCC	



# TF Series

## TRANSPARENT FACADE

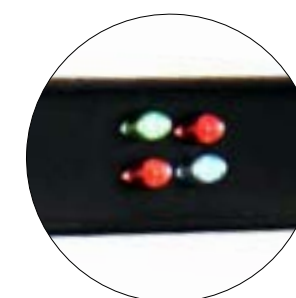
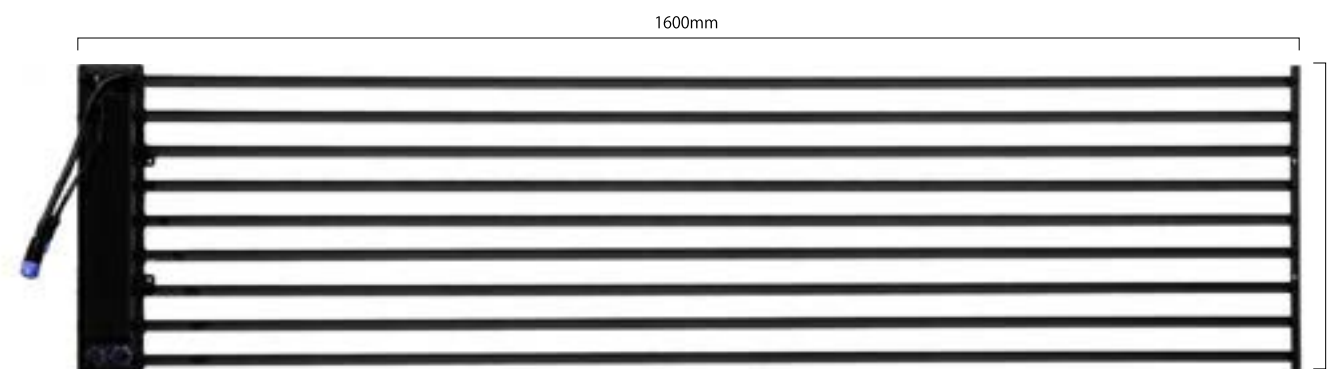
TF series is an innovative LED screen which is specially designed for outdoor large-scaled building façade. It applies individual replaceable LED strips and has over 60% transparency, highly wind-resistant function.

### Features:

1. 5000-6000 nit brightness provides a sharp image even in daylight.
2. Quick and easy installation: Panels could be installed and dismantled from front or rear of the screen.
3. Ultra slim & light weight: the thinnest part is less than 23mm. This allows the screen to be attached closely to the building without affecting the building's overall style.
4. Front and rear IP65 rating: high reliable connectors are applied to satisfy outdoor application needs.



SPECIFICATIONS	TF25	TF30	TF40
PIXEL PITCH	25mm	30mm	40mm
PANEL RESOLUTION	48×16 dots	52×13 dots	40×10 dots
LED QUANTITY/PANEL	768 dots	676 dots	400 dots
PIXEL CONFIGURATION	1R1G1B	2R1G1B	3R2G2B
BRIGHTNESS	5000-6000 nits*		
REFRESH RATE	1000-2000Hz		1000-3000Hz
GREY SCALE	16 bit		
BRIGHTNESS ADJUSTMENT	256 Level		
CONTRAST	1000:1		
PANEL DIMENSION	400×1200mm	400×1600mm	400×1600mm
PANEL AREA	0.48m <sup>2</sup>	0.64m <sup>2</sup>	0.64m <sup>2</sup>
PANEL WEIGHT	7 kg	10 kg	8 kg
AVERAGE POWER CONSUMPTION	130W		150W
VIEWING ANGLE	120°/60°		
SHORTEST VIEWING DISTANCE	25m	30m	40m
TRANSPARENCY	59%	63%	71%
OUT-OF-CONTROL POINT	<0.0002		
TENURE LIFE OF LAMP (50%BRIGHTNESS)	>50,000Hours		
OPERATING TEMPERATURE	-30C~+40C		
RELATIVE HUMIDITY	10%~90%		
IP RATING	IP65		
INPUT POWER	AC110-240V 50/60Hz		
DRIVE MODE	Constant Current		
OPERATING SYSTEM	Windows2000/XP/Vista/Windows7		
SIGNAL TYPE (ADOPTING VIDEO PROCESSOR)	AV,S-Video,VGA,CVBS,HDMI,DVI,SDI		
CONTROL DISTANCE	HSYV<100m		
CERTIFICATE	CE		



# MA Series

MEDIA ADVERTISING



ROTATING TOWER

SLIDING SCREEN

## ROTATING TOWER

Rotating tower is a 360 degree LED display tower. It offers an unique freedom to display content in one single screen, three screens or nine screens.



## SLIDING SCREEN

One can go super creative with the Sliding screen. A sliding screen can work as a traditional LED advertising screen, while the slider can also work as a lift or a partition between the two sides.

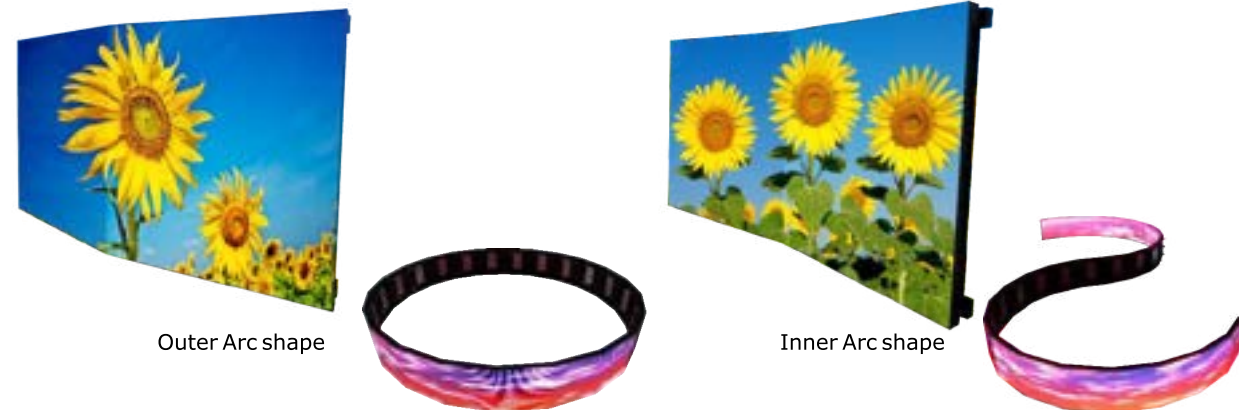


# CA Series

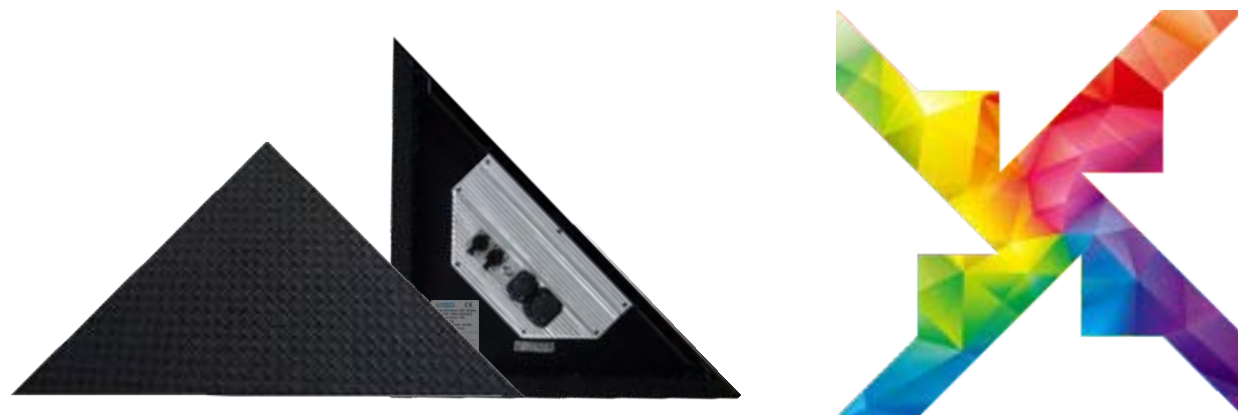
CREATIVE APPLICATION

The creative application series offers unique multi holes design, together with easy operating connectors, it can easily make the vertical, horizontal, front and back dislocation installation. It allows us to achieve multiple creative extension product, right angle LED display, triangle LED display, circular LED display. We can realise the installation from number 0 to 9, from letter A to Z and multiple creative shapes like Christmas tree, diamond, windmill, flower, wine glass, etc.

## OUTER & INNER CURVE



## TRIANGLE LED DISPLAY

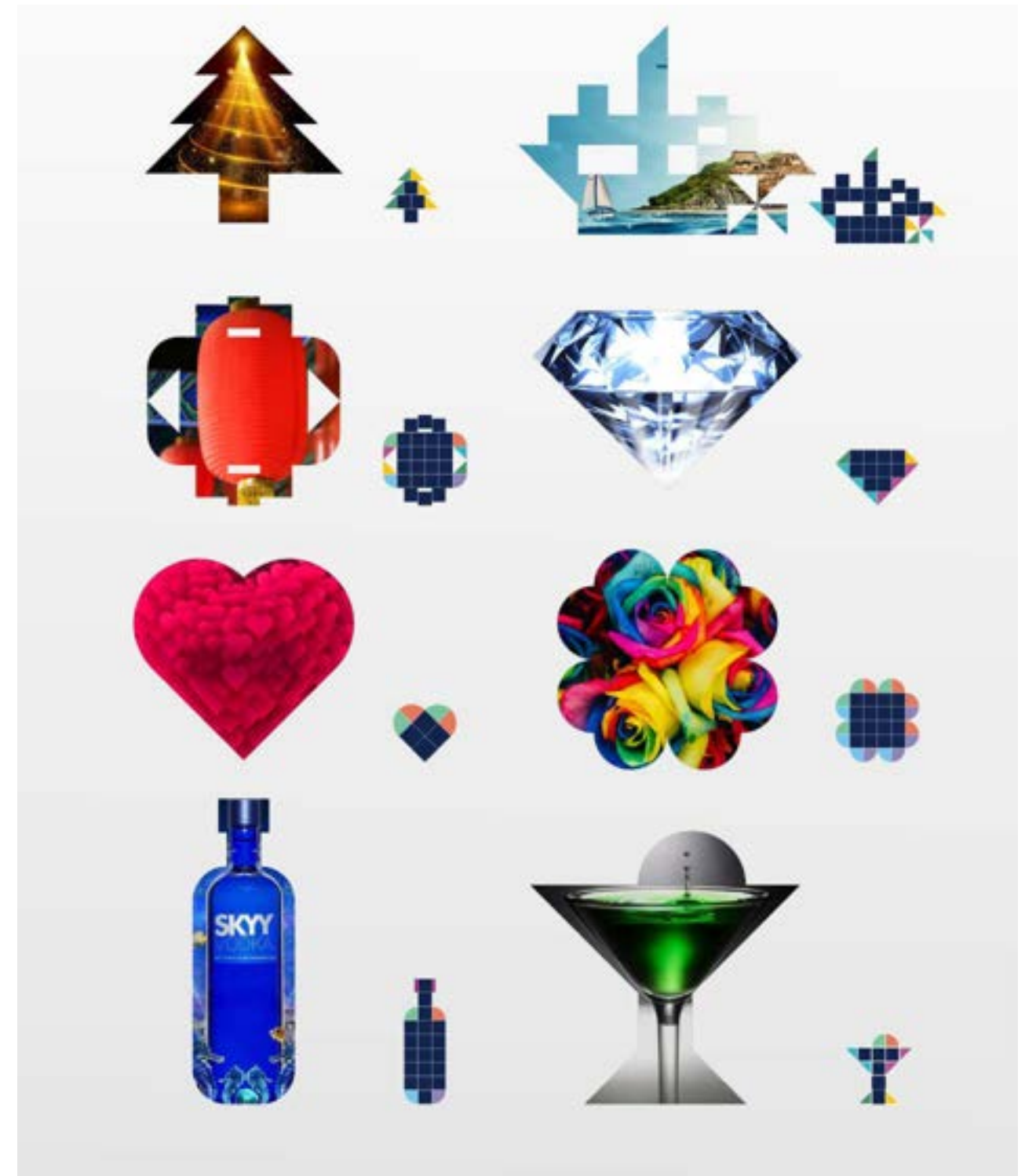


## CIRCULAR LED DISPLAY



## MULTIPLE CREATIVE SHAPES

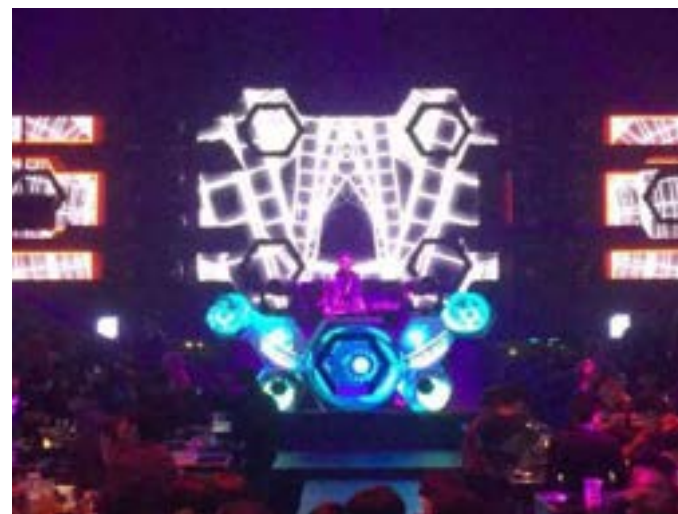
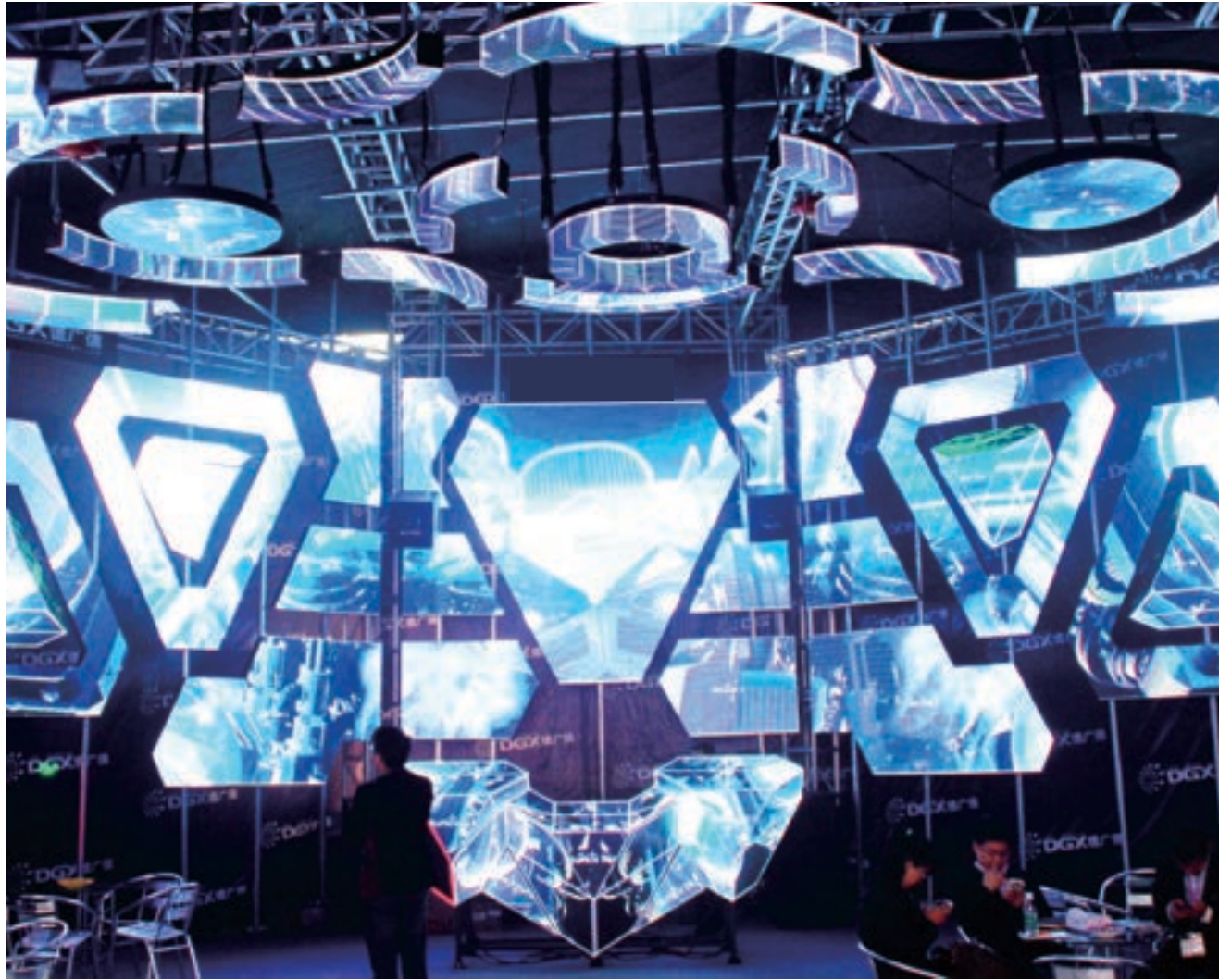
Break through the limitation of a traditional LED screen, and explore the world of Innovative LED displays with creative shapes and applications.



# NC Series

NIGHT CLUB

Our Specially designed LED display solution caters to the new generation high -end night clubs. It's a unique combination of intelligent technology and excellent lighting effects which can create stunning environment as per the night's theme.



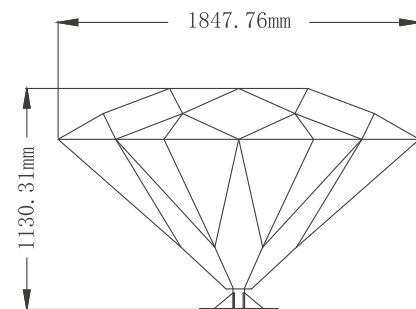
# DJ Series

DISC JOCKEY

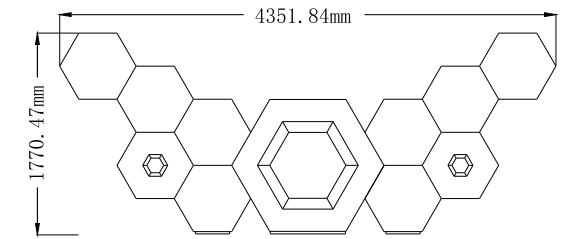
Let's do away with the old and boring DJ Booth. Our innovative LED displays provide a new look to the night club.



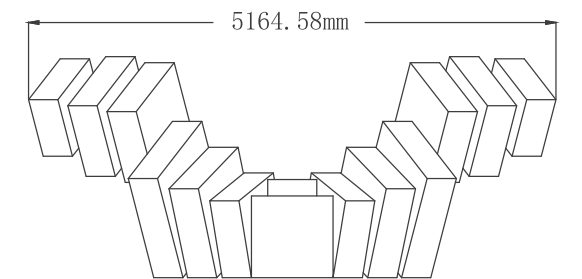
DIAMOND DJ BOOTH



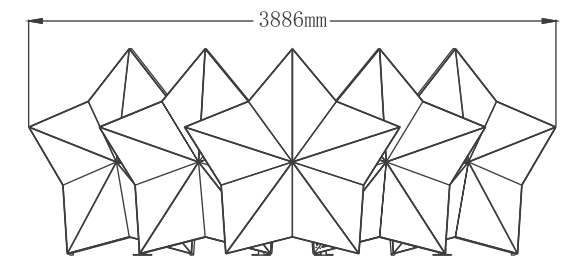
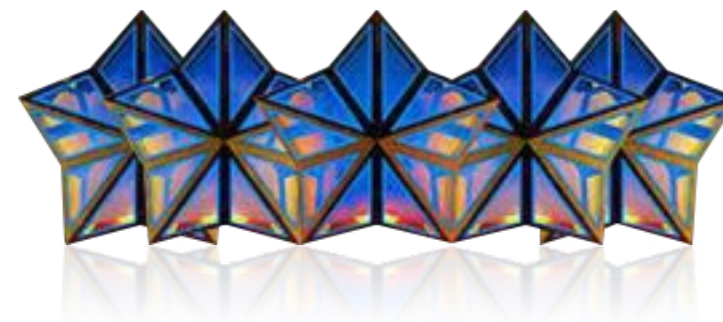
BATTLESHIP DJ BOOTH



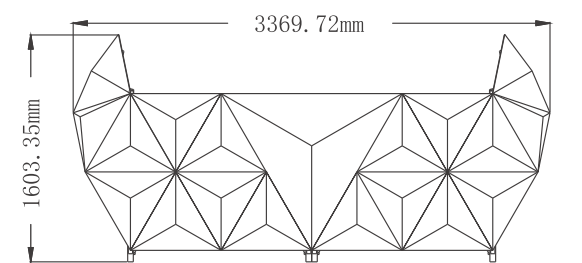
MAGIC DJ BOOTH



SUPER STAR DJ BOOTH



NIGHT ELVES DJ BOOTH



# BL Series

BUILDING LIGHTING

Our unique and innovative products are suitable for building lighting and for indoor / outdoor lighting effects. The main products are LED stripe light, LED series, LED wall washer, LED lamp, aluminium LED spot light, LED underwater lights, buried lights, LED lamp, LED tube, LED meteor patch lights, string lights, net lights, street lamp, tunnel lamp, etc.

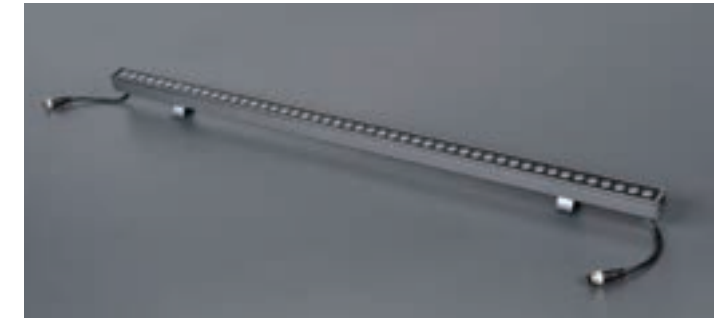


## EXQUISITE

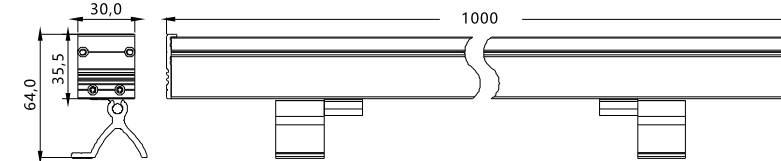
This product is suitable for building exterior and facade lighting.

### Features:

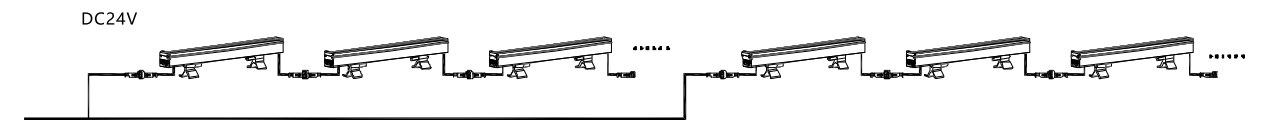
1. Waterproof: Double waterproof and unique drainage design to ensure that the lamps stay in outdoor weather.
2. Lampshade: High transmittance ultra white glass.
3. Lamp body: AL 6063 high thermal conductivity aluminium alloy extrusion moulding, anodized surface treatment.
4. Chip: Selected international brands Jingyuan super bright chips.



### Product size chart



### Product wiring diagram



### Technical parameters

Light source	Epistar
LED/Power of each LED	5050 0.2W/0.5WPCS
LED Life span	30000H
LED Quantity	48PCS
LED color	Red/Green/Bule/Amber/White/Warm White/RGB
Beam angle	120°
Enclosure material	Extruded aluminum lamp body, surface anodic oxidation treatment
Lamp size	30*34*1000mm
Glass material	3mm Reinforced glass
Working voltage	DC24V
Control mode	SPI/DMX512 Constant pressure drive/SPI/DMX512
System power	10W/12W/15W
Protection level	IP65
Power Cable	2*1mm <sup>2</sup>
Ambient temperature	-20°C ~ +50°C
Lamp Weight	1KG

## LINEAR WASH WALL LAMP

This product is suitable for building exterior and facade lighting.

### Features:

1. Waterproof: Double waterproof and unique drainage design to ensure that the lamps stay in outdoor weather.
2. Lampshade: High transmittance ultra white glass.
3. Lamp body: AL 6063 high thermal conductivity aluminium alloy extrusion moulding, anodized surface treatment.
4. Chip: Selected international brands Jingyuan super bright chips.

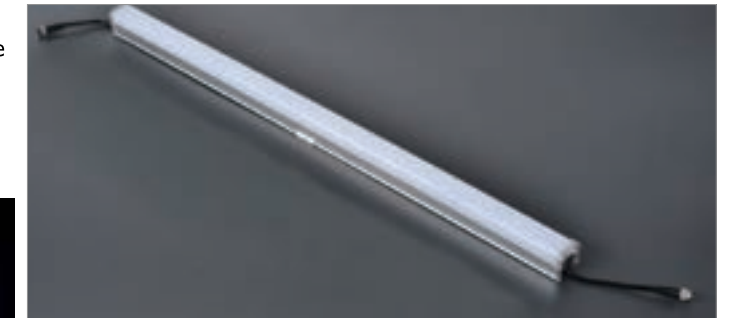


### Technical parameters

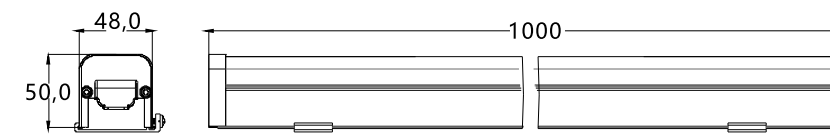
Light source	Epistar
LED Life span	30000h
LED/LED power per each	0.2W/0.5W
LED Quantity	48PCS
LED color	Red/Green/Bule/Amber/White/Warm White
Beam angle	120°
Enclosure material	Extruded aluminum lamp body, surface anodic oxidation treatment.
Lamp body size	27*21*1000mm
Lampshade material	Extruded aluminum lamp body
Input voltage	DC24V
Control mode	constant voltage driving
System power	10W/12W/15W±10%
Protection Rating	IP65
Cable wire	2*1mm <sup>2</sup>
Ambient temperature	-20°C ~ 50°C
Lamp Weight	0.7KG

## NIGHT STAR

This product is suitable for building exterior and facade lighting.



### Product size chart



### Technical parameters

Light source	Epistar
Power of each LED	0.5W
LED Life span	30000H
LED Quantity	48/60PCS
LED color	Color / Monochrome
Beam angle	120°
Enclosure material	Extruded aluminum lamp body, surface anodic oxidation treatment
Lamp size	48*50*1000mm
Lampshade material	Anti UV, anti aging PC raw materials
Working voltage	DC24V
Control mode	SPI/DMX512 Constant pressure drive/SPI/DMX512
System power	10/15W±10%
Protection level	IP65
Power Cable	2*1mm <sup>2</sup>
Ambient temperature	-20°C-50°C
Lamp Weight	0.7KG





# LCD Video Wall

## Multiple Configurations

These displays can be used to create Video Walls of any configuration, for example 2x2, 3x3, 1x4, 5x3 etc.

## Super Image quality

Superior Image quality and color depth at 178 degree ultra wide viewing angle in both landscape and portrait orientation with no blackening effect.

## Portrait & Landscape Orientation

The Video wall panels can be used in either Portrait & Landscape orientation, depending on your requirement.

## Super Narrow Bezel

Virtually seamless appearance with a bezel of just 1.8mm between two panels.



## Automatic Tiling

With HDMI Splitter and HDMI Matrix, no additional hardware is required to get your Video wall display playing in any configuration.

## Advanced Temperature Control

Each panel has an advanced temperature control system which allows it to keep running at the optimum temperature for longer duration.

## Environmentally Power Timer

Allows for a reduced power usage in those hours that the displays are not required. Set daily or weekly on/off times for your displays.

## Connectivity

You can run the Video Wall display from your PC / laptop or Media Player as they have a powerful interface that supports a wide range of audio & visual inputs such as HDMI, VGA, DVI, etc.

	Display Size	46 Inch	49 Inch	55 Inch
Panel	Resolution	1920x1080		
	Bezel Size	1.8mm/3.5mm		
	Active Area (HxWmm)	1018.08x572.67	1074x604.2	1209.6x680.4
	Aspect Ratio	169		
	Brightness (nits)	450/500/700/800		
	Colour	167M		
	Colour Temperature	10000K		
	Viewing Angle	178°		
	Contrast Ratio	40001		
	Back light Life	50000hours		
AV Inputs / Outputs	Video	HDMI, DVI, VGA, RGB/HV (BNC), Video1 IN (BNC), Video2 IN (BNC), Video1 OUT (BNC)		
	Audio	Audioin , Audioout		
Power	Power Consumption	150	155	160
	Input Voltage	100V ~ 240V(50/60Hz)		
	Power Management	VESA DPMS		
Mechanical	Unit Size (L x W x H mm )	1024x578x123	1077x607x120	1213x684x123
	Net Weight (Kg)	22.15	22.4	28.8
	Gross Weight (Kg)	28	28.5	35.5
	Package Size	1300x700x200	1300x700x200	1500x750x200
Environmental	Working Temperature	0-50°		
	Operating Humidity	10-90%		
	Working Pressure	800-1114 hPa (Altitude:0-2,000m)		
Accessories	Included	Remote control, AC Power Cable, User Manual, VGA/HDMI Cable, OSD Control Box		



# LCD Digital Signage

## Plug & Play

Plug & Play is the easiest and most simple way to upload content to the screen. Simply load images / videos into a USB driver, copy the content in the device's internal memory; now the content will play in a continuous loop.

## Internal Locker

If you want to use the screen as a monitor, then you can connect external device via HDMI or VGA cable and keep the device in the discrete internal locker.

## Commercial Usage

Designed to be used for commercial applications as the screen can run for 24/7. There is no external buttons or controls to avoid tampering.



## LED Back light

The advanced technology has reduced the power consumption and also improves the lifespan of the panel. Unlike other forms of light, this technology is mercury free; making it more eco- friendly. The panel and back light have a life span in excess of 50,000 hours.

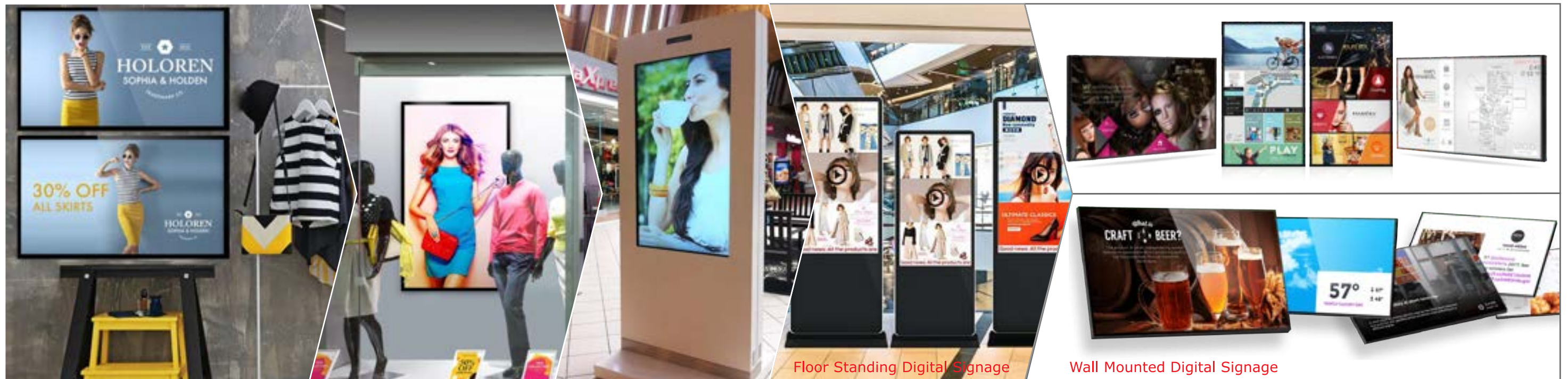
## Integrated Android Media Player

The integrated Android Media Player allows super fast updates. If required you can also run the third party Digital Signage software to play content.

## Giant Tablet Styling

Designed to resemble the giant smart phone tablet.

	DisplaySize	43 Inch	49 Inch	55 Inch	65 Inch	75 Inch	85 Inch	
Panel	Resolution	1080x1920						
	Display Area (mm)	943x531	1050x600	1210x680	1428x803	1650x980	1800x1000	
	Aspect Ratio	169						
	Brightness (cd/m <sup>2</sup> )	500						
	Colour	16.7M						
	Viewing Angle	178°						
	Contrast Ratio	4000:1						
Audio	Speaker Type	6W, 8 Ω (x 2)						
AV Inputs	Video	HDMI, VGA						
	Audio	AudioSocket (35mm)						
Power	Power Consumption (W)	100 ≤	≤130	≤150	≤160	≤160	≤180	
	Input Voltage	AC110~240V (50Hz~60Hz)						
Mechanical	Unit Size (HxWxHmm)	1800×640×50	1800×700×50	1930×810×50	1930×935×70	1943×1060×80	1969×1160×85	
	Package Size (HxWxHmm)	2060x800x80	2060x950x80	2060x990x80	2060x1000x90	2060x1200x100	2060x1400x100	
	Net Weight (kg)	49	55	63.5	135	165	220	
	Gross Weight (kg)	59	65	75	150	180	240	
Environmental	Operating Temperature	-10° - 50°						
	Storage Temperature	30° - 60°						
	Operating Humidity	10% to 80%						
	Storage Humidity	5% to 95%						
Feature	Internal Media Player	Media Formats	Video (MPG, AVI, MP4, RM, RMVB, TS), Audio (MP3, WMA), Image (JPG, GIF, BMP, PNG)					
		Media Resolution	1080x1920					
		Internal Memory	32GB					
		CPU	A83T/RK3288					
		GPU	N/A					
		RAM	1GB DDR3					
		ROM	8GB NAND					
		USB	USB2.0 HOST (x2)					
		LAN	10/100M Ethernet (Network version screen only)					
		Wi-Fi	802.11b/g/n (Network version screen only)					
OS	Android 6.1							
Graphic Engine	N/A							
Accessories	Included	Scheduling Software, Remote Control, Key, User Manual						
	Optional	Network Upgrade, Touch Screen Upgrade						



\* Appearance, structure and border design and color can be customised.

\*\* Multiple size screen are available ( 32", 36", 43", 46", 49", 55", 58", 65", 70", 82", 84", 98")

# TOUCH Screen Kiosk

Touch Screen kiosk is suitable for shopping malls, restaurant, Hotel, Movie theatre, Hospital, Bank, Airport Subway, School, etc. The product is available in multiple sizes i.e. 21.5", 26", 32", 43", 55", 65", 70", 84".

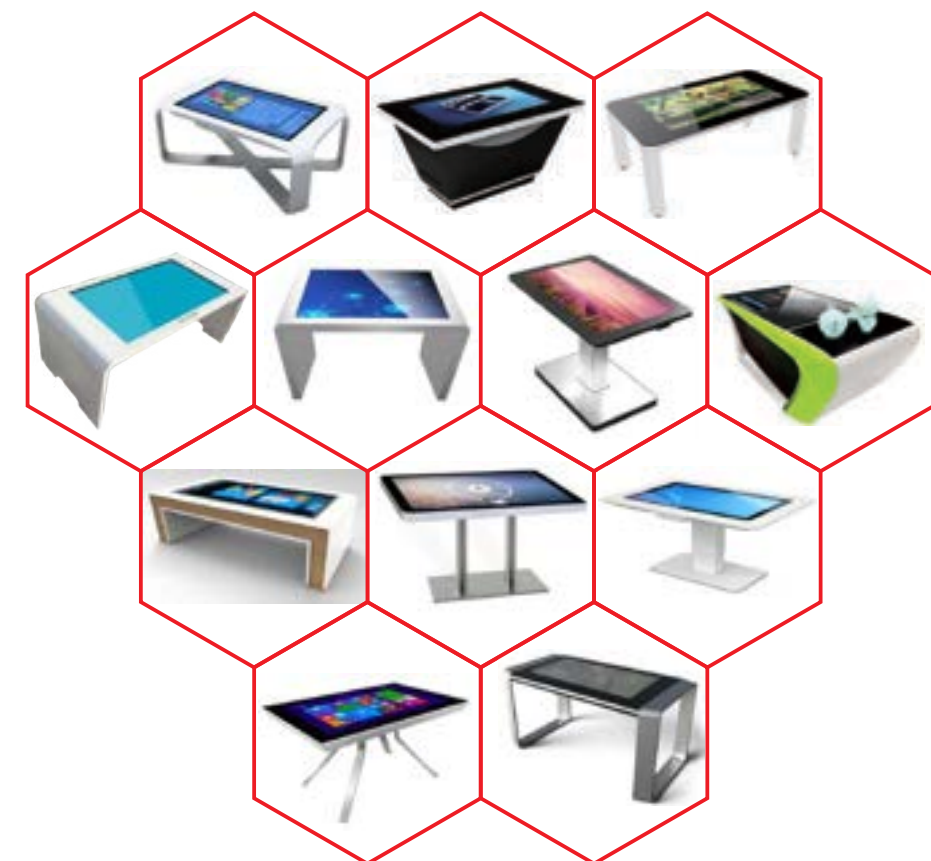
## Features:

1. Resolution: 1920\* 1080
2. Smart Android 6.1
3. CPU: RK 3188/RK 3288 Quad core
4. 10 Points IR Touch
5. Ethernet, Wifi, 3G, network optional
6. Vertical / Horizontal screen
7. Support split screen
8. Update content by USB / PC



# TOUCH Screen Table

Touch Screen Table is compatible with all kinds of computer operating system; no dead angle, no need of a touch pen, is highly responsive and supports multi point touch. This product is suitable for shopping malls, Hotel, retail chain stores, Movie theatre, Hospital, Bank, Airport, exhibition center, School, etc. The product is available in multiple sizes i.e. 21.5", 26", 32", 43", 55", 65", 70", 84".



# WHITEBOARD

MULTIMEDIA TEACHING ALL-IN- ONE

The Multimedia All - in - one Whiteboard is compatible with Android & PC dual system touch operation, can access the internet without PC, play multimedia files, PPT demo, can install Applications, etc.

**Features:**

1. Resolution: 3840 \* 2160
2. Operating system: WIN7 / WIN8/ WIN10/ Android
3. Whiteboard function support
4. Anti glare tempered glass
5. Wall hanging bracket or Moving support.
6. Available in 42", 46", 55" 65", 72", 84" sizes.



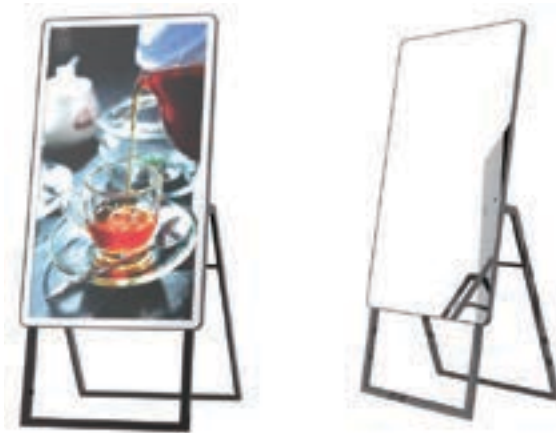
# OUR PARTNERS



# MIRROR

ADVERTISING DISPLAY

Mirror advertising display supports a high resolution screen and can be remote controlled by internet. It acts as a mirror; quickly gets converted into a screen and provides a great visual delight and experience. It can support various multimedia format files, automatic playback, play list setting, split screen display, etc. The screen is available in 21.5", 26",32", 43", 49", 55" 65", 70", 84" sizes.



For further information & product inquiries, feel free to contact

Aditya Jha  
0091 9920 825 343

Sandeep Singh  
0091 8655 480 758

[www.luma.co.in](http://www.luma.co.in)  
[info.lumaled@gmail.com](mailto:info.lumaled@gmail.com)